

ø152 x H100 / 150 (mm)  
Rth 0.52 - 0.46 °C/W  
Power Pd 95 - 110 W

[MORE PRODUCT DETAILS](#)

## ModuLED Giga-HBG High Bay LED Cooler ø152mm with driver connection system

### Accessories

#### External driver box connection option



MechaTronix was formed in 2007, comprised of five already successful manufacturing companies, with each of them in excess of a decade of continuous operation. MechaTronix provides a wide variety of mechanical and electromechanical parts as well as assemblies for the international Original Equipment Manufacturers market.

#### Mounting indicator marks overview

The CoolBox driver box design keeps automatically the necessary space towards the LED cooler, so free air convection will not be blocked - no extra spacer needed.



#### MechaTronix driver box

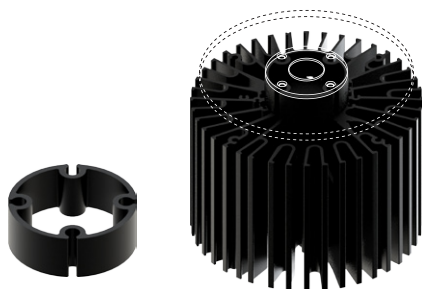
This universal driver box is designed in this way that almost all drivers available in the market up to 160 Watt can be mounted inside without the need of drilling or mechanical adaptations. The universal drivers clamping fixation also creates the perfect locking of your driver towards the top shell, so conduction can easily occur and convection towards the outside will guarantee the driver to keep within temperature specs.

##### Model Names

- CoolBox  
Universal driver box for ModuLED and CoolBay® high bay LED coolers

##### Mounting

- Direct mounting on the LED cooler with 4 screws M5 x 10mm  
Orange indicator marks



#### MechaTronix driver box connector ring

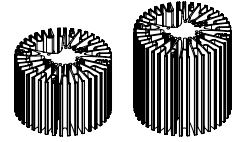
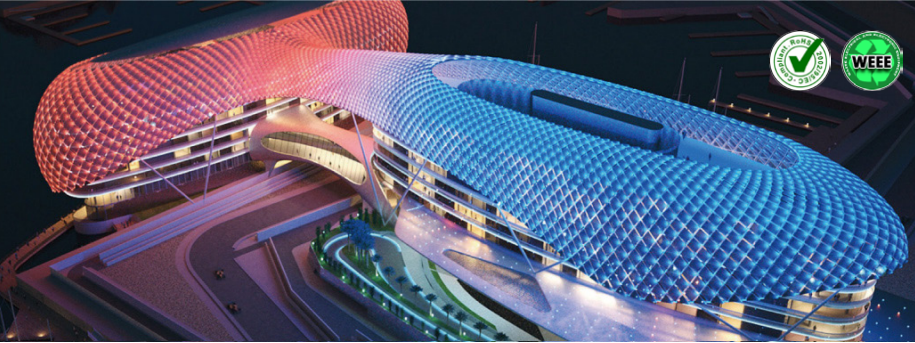
The driver box connector ring guarantees you the ideal space between the ModuLED LED cooler and your external driver box. With its open structure and aluminium conductivity, this is the ideal bridge between any driver box in the market and our high bay coolers.

##### Model Names

- Driver box connector ring

##### Mounting

- Direct mounting on the LED cooler with 4 screws M5 x 30mm  
Orange indicator marks



ø152 x H100 / 150 (mm)  
Rth 0.52 - 0.46 °C/W  
Power Pd 95 - 110 W

[MORE PRODUCT DETAILS](#)

## ModuLED Giga-HBG High Bay LED Cooler ø152mm with driver connection system

### Accessories

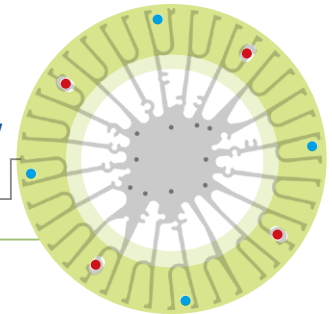
#### Lens & reflector connection



With regards to reflectors we have equipped our high bay with the most common high bay reflector standard, the 143mm pitch. For the lenses the standard mounting pattern is foreseen for all 100mm lenses with or without rubber gasket. Although we don't produce our own lenses and reflectors, we keep a limited number of models from stock available for your urgent needs. Below you can find an overview of these models as well as the mounting patterns which go along.

#### Mounting indicator marks overview

ModuLED Giga  
Optics adaptor



#### Adaptor plate for connection of reflector & lens

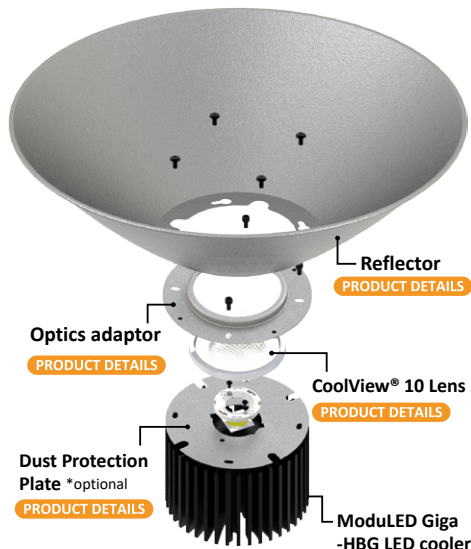
With the ModuLED Giga optics adaptor you get an unprecedented flexibility in choices of optics. Equipping your high bays with a wide variety of reflectors in metal or plastic, adding lenses for a controlled light image,... it all becomes plug-and-play.

##### Model Names

- ModuLED Giga optics adaptor v2

##### Mounting

- Direct mounting on the LED cooler with 4 screws M5 x 6mm  
Red indicator marks



#### CoolView® 10 AG series Anti-Glare Lens

High end patented anti-glare lenses made out of borosilicate glass with beam angles 60°, 90° or 120°. Uniform light dispersion with high transparency 95% efficient borosilicate glass. Comes together with a high quality rubber gasket & metal frame (lens holder) - IP67 ingress protection against dust and moisture.

##### Model names

- CoolView® 10-60 AG
- CoolView® 10-90 AG
- CoolView® 10-120 AG

##### Mounting

- With Optics adaptor v2 + (4x) MTX screws M5 x 10mm  
Red indicator marks

#### CoolBay® Reflector

A limited range of high-end off-the-shelf available high bay reflectors in high transfective coated aluminium or polycarbonate. All our reflectors follow the most common mounting standard with a pitch of 143mm and can be fixed with the ModuLED Giga optics adaptor towards the LED cooler. All our reflectors are transported in a special adapted packaging for damage prevention.

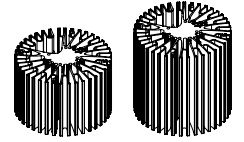
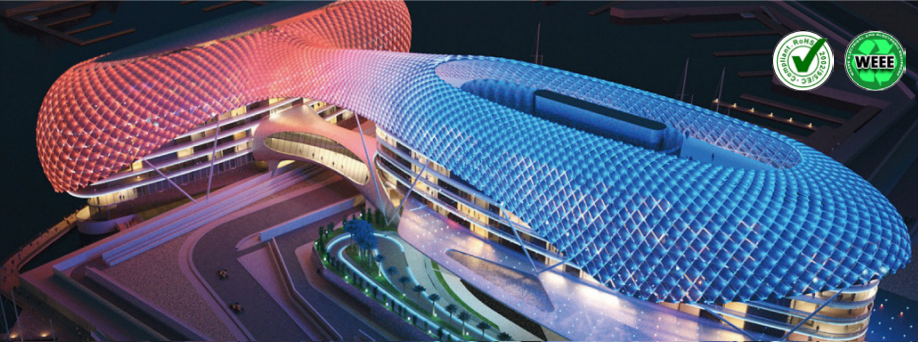
##### Model names

- CoolBay® Reflector 45
- CoolBay® Reflector 45 PC
- CoolBay® Reflector 90
- CoolBay® Reflector 120

##### Mounting

- Direct mounting on optics adaptor with 4 screws M5 x 6mm  
Blue indicator marks

\* To prevent dust accumulation in the lens or PC reflector cover through open structure of the ModuLED-HBG series cooling fins, please equip your lens with MechaTronix [Dust Protection Plate](#).

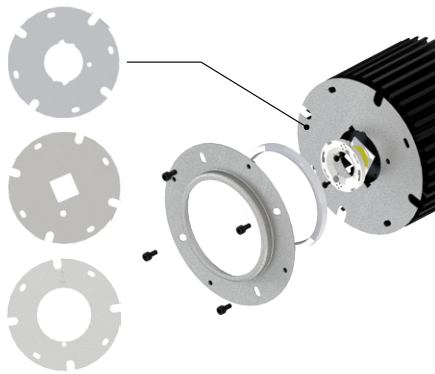


ø152 x H100 / 150 (mm)  
Rth 0.52 - 0.46 °C/W  
Power Pd 95 - 110 W

[MORE PRODUCT DETAILS](#)

## ModuLED Giga-HBG High Bay LED Cooler ø152mm with driver connection system

### Accessories



#### Dust Protection Plate

When you are using lenses on the ModuLED high bay coolers, the open structure of the cooling fins might lead to dust accumulation in the lens. To avoid this MechaTronix has developed a range of dust protection plates (DPP) which go along with various COB sizes and LED holders. This option is of course not needed when you equip your high bay with a non-cover reflector only.

#### Model Names

- DPP-Giga-2828
- DPP-Giga-3838
- DPP-Giga-ZHAGA3
- DPP-Giga-BW458
- DPP-Giga-BW431

#### Mounting

- Mount in between the LED cooler & lens / reflector by use with optics adaptor  
4 MTX screws M5 x 6mm  
Red indicator marks