

ø152 x H20 / 50 (mm)
 Rth 1.13 - 0.7 °C/W
 Power Pd 44 - 71 W

[MORE PRODUCT DETAILS](#)

ModuLED Giga | Bridgelux Modular Passive Star LED Cooler ø152mm

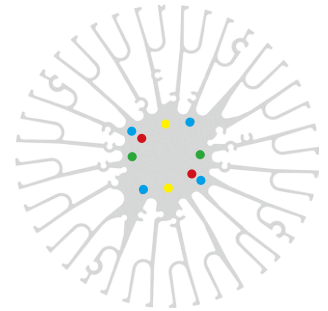
Mounting Instruction



Bridgelux is a leading provider of high power, cost effective and energy efficient light emitting diode (LED) solutions. Leveraging patented light source technology, Bridgelux LED Arrays replace traditional technologies (such as incandescent, halogen, fluorescent and high intensity discharge lighting) with integrated solid state light sources enabling high performance and energy-efficient products for the general lighting market.

Mounting indicator marks overview

MechaTronix recommends the use of a high thermal conductive interface between the LED module and the LED cooler. Either thermal grease, a thermal pad or a phase change thermal pad thickness 0.1-0.15mm is recommended. Thermal pads or phase change thermal pads can be pre-applied from MechaTronix.



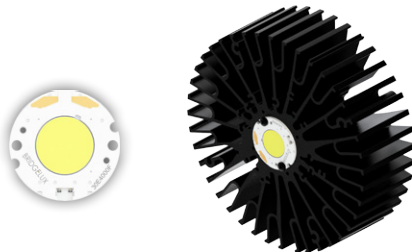
Bridgelux Gen7 Vero 13 & Décor Vero 13 LED Array

Model names

- BXRC-xxx200x-x-7x

Mounting

- Direct mounting with 2 self tapping screws M3 x 6mm
 Green indicator marks



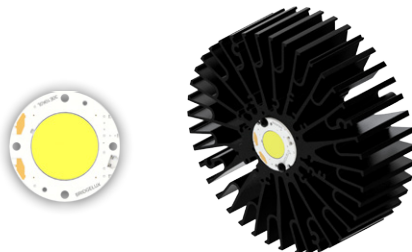
Bridgelux Gen7 Vero 18 & Décor Vero 18 LED Array

Model names

- BXRC-xxx400x-x-7x

Mounting

- Direct mounting with 2 self tapping screws M3 x 6mm
 Red indicator marks



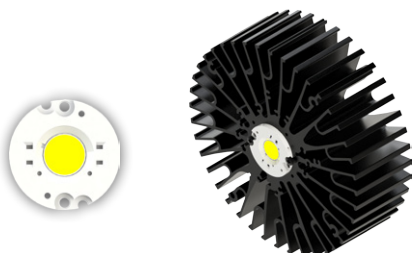
Bridgelux Gen7 Vero 29 & Décor Vero 29 LED Array

Model names

- BXRC-xxx10Kx-x-7x

Mounting

- Direct mounting with 2 self tapping screws M3 x 6mm
 Red indicator marks



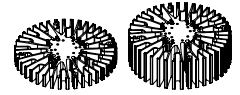
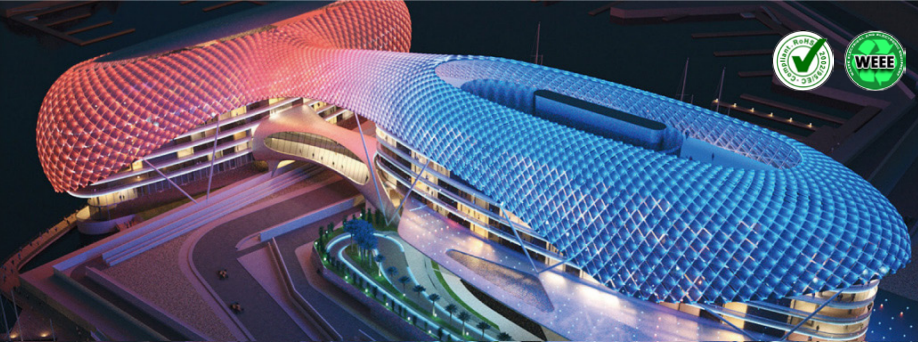
Bridgelux Vero SE 13 - 18 & Décor Vero SE 13 - 18 LED Array

Model names

- BXRC-xxx200x-x-7x-SE
- BXRC-xxx400x-x-7x-SE

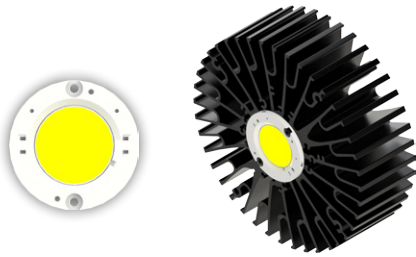
Mounting

- Direct mounting with 2 self tapping screws M3 x 6mm
 Green indicator marks



ModuLED Giga | Bridgelux Modular Passive Star LED Cooler ø152mm

Mounting Instruction



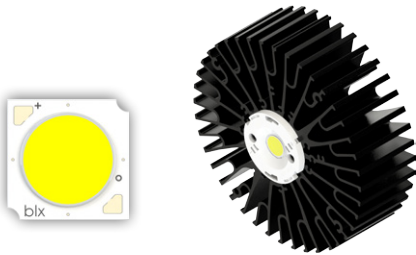
Bridgelux Vero SE 29 & Décor Vero SE 29 LED Array

Model names

- BXRC-xxx10Kx-x-7x-SE

Mounting

- Direct mounting with 2 self tapping screws M3 x 6mm
Blue indicator marks



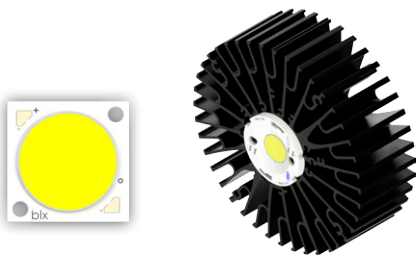
Bridgelux Gen7 V series V 13 LED Array

Model names

- BXRE-xxx200x-x-7x

Mounting

- With Zhaga Book 3 LED holder
BJB spotlight connector 47.319.2025
Ideal Industries Chip-Lok™ holder 50-2103CT
Ledil HEKLA solderless connector FP15949_HEKLA-I
Mounting with 2 self tapping screws M3 x 6mm
Green indicator marks



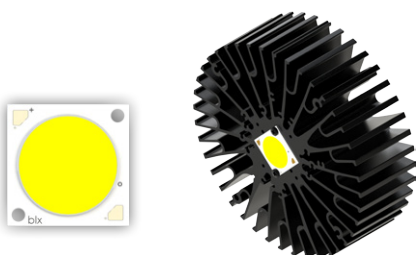
Bridgelux Gen7 V series V 18 LED Array

Model names

- BXRE-xxx400x-x-7x

Mounting

- With Zhaga Book 3 LED holder
BJB spotlight connector 47.319.2350
Mounting with 2 self tapping screws M3 x 6mm
Green indicator marks



Bridgelux Gen7 V series V 22 LED Array

Model names

- BXRE-xxx650x-x-7x

Mounting

- Direct mounting with 2 screws M3 x 6mm
Yellow indicator marks
- With Zhaga Book 3 LED holder
BJB spotlight connector 47.319.2030
Bender+Wirth 431 Typ 2
Ideal Industries Chip-Lok™ holder 50-2204CT
Mounting with 2 self tapping screws M3 x 6mm
Green indicator marks